

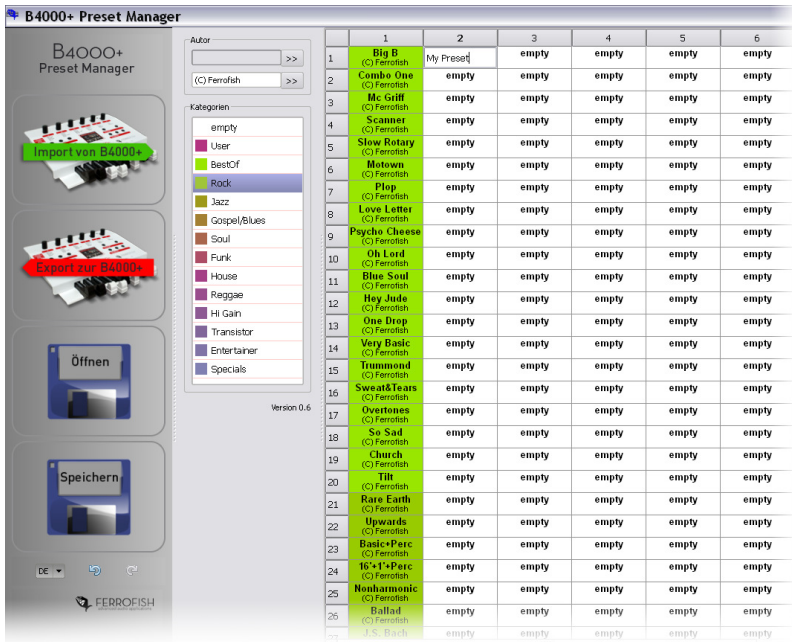
Preset Manager

B4000+

authentic organ modeller

Version 0.6

FERROFISH
advanced audio applications



Introduction

With the *B4000+ Preset Manager* you can rename, sort and categorize the presets you created on the B4000+. You also can store a copy of the presets on your computer, and share with other users.

The B4000+ has 16 banke with 128 presets each. The first bank is the factory bank, we already stored presets there, and can't be overwritten. The other 15 banks you can use for your own presets.

You can store and load either all 15 banks (except the first bank obviously), or alternatively only a single bank. One application is to make a backup of your presets, or share single banks with your friends.

B4000+ Firmware

The program, which is stored in the B4000+ is called firmware. Before using the preset manager, please check for a new version of the firmware. Please check on our website www.ferrofish.de, if a new firmware is available. You can check the current firmware by pressing the key “Play” long on the B4000+, and then press “Play” again several times, until you see the firmware version.

Installation

Please start the program Installation B4000+ Preset Manager.exe and follow the installation instructions. After the installation you find the program in the start menu under Start->Ferrofish->B4000+ Preset Manager.



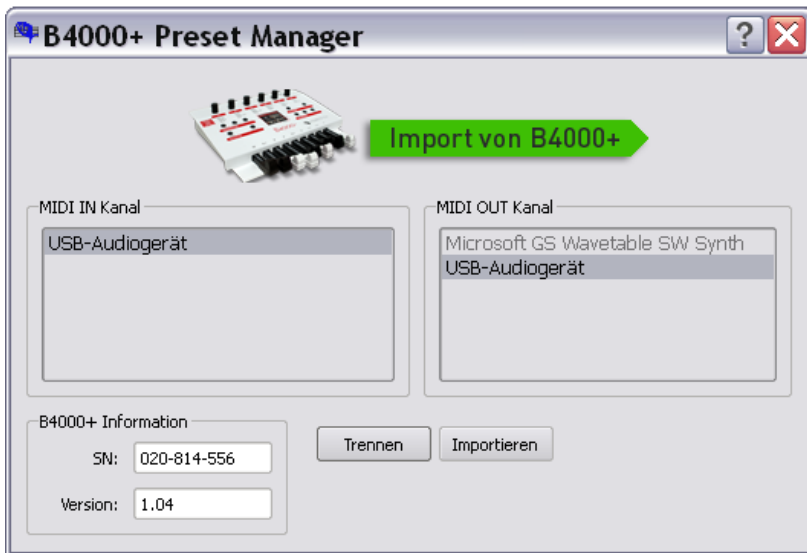
You can set the language to english by selecting EN on the bottom left. Then restart the program to have the correct language.

Import and export

First you should connect the B4000+ with your computer, and switch it on. The B4000+ will be recognized as USB MIDI device, and don't need custom drivers.

Import and export

After starting the Preset Manager press the button *Import from B4000+*. Now the program loads all presets from the B4000+:



First select your B4000+ as MIDI IN and MIDI OUT device. If you use Mac or Windows 7 or higher, you see the name of the unit, with older versions you may see “USB device”.

Then press *Connect*. If everything is correct, you should see the serial number and the firmware version of your unit.

Now start the import. Just press *Import*. After about 30 seconds all presets are copied to your computer and will be displayed in the main window.

The next chapter shows how you can move and modify the presets. When you want to copy back the presets to your B4000+ press *Export to B4000+* in the main window. The remaining steps are then identical to the import.

Load and save

Make a backup of your presets

First, it's a good idea to save the just imported presets to your harddisk, so you have a backup in case anything goes wrong.

For this, you use the buttons *load* and *save*.

Press *save* and select *all*. All 15 banks are then stored to your harddisk (bank 1 is not needed).

Saving single banks

If you like to share a collection of presets with others, it's a good idea to organize them in a single bank. This bank you can save then and use this file. Select *this*, and choose the bank you want to save.



When loading, the program detects if a single bank should be loaded, and then asks which bank should be overwritten.

Changing the preset data

The following information is stored together with the preset values for each preset:

Name

The name as shown in the preset screen of the B4000+. When you store a new preset, it is named “user 0001” etc. Here you can replace this name with a more descriptive name.

Author

To change the author of the preset just enter the text in the field “author”. Then mark the presets you want to change with the mouse and then press the “>>” button on the right where you entered the text. You also can click the column heading to change the whole preset bank.

You can also copy a preset name from an existing preset so you don't have to enter the author name again.

Category

To set a category, just select the presets you want to change, and then click on the category button.

Copy and move presets

drag and drop

First select the presets you want to move with the mouse. Then click inside the selected area and drag the mouse to the new position.

Using the keyboard

Alternatively you also can click with the right mouse key in the selected area. Now you see a small menu, where you can cut copy and paste this area. In addition you also can delete presets, they appear as “empty” then again.



If you made a mistake when changing the presets, don't worry! On the left lower side of the screen you see two green arrows, they are for undo and redo.

FERROFISH

advanced audio applications